

HÔTEL BARRIÈRE

Fouquet's

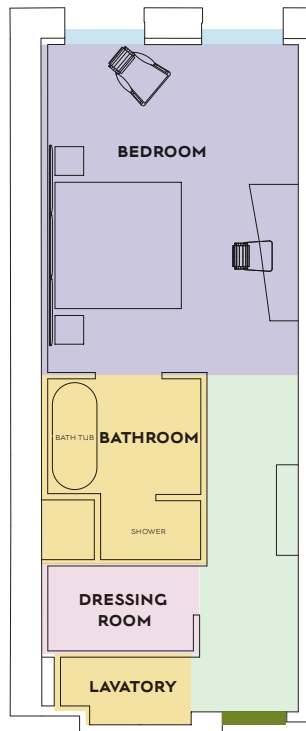
PARIS



Prestige Champs-Élysées Room

SURFACE AREA: 37 SQM - 400 SQFT

VIEW OVER THE CHAMPS-ÉLYSÉES



Enjoy the comfort and intimacy of this 37 sqm soundproofed Room with views over the Champs-Élysées. Boasting high ceilings and equipped with the latest technology, this light-filled Prestige Champs-Élysées Room features a king size bed, desk, beautiful bathroom and a dressing room. An exclusive haven on the most beautiful avenue in the world.



Bedroom

- Decorated by French designer Jacques Garcia, Signature headboard
- High ceilings (3.50 m - 12 ft)
- View over the Champs-Élysées
- Perfectly sound-proofed (four times glazed windows)
- King size bed
- Dressing room
- Dressing table
- Desk
- Balcony upon availability

Bathroom

- Separate shower and bathtub with TV
- Double sink
- Separate lavatory

• Wi-Fi

- Minibar offering complimentary selection of non-alcoholic drinks and snacks
- Nespresso coffee machine and tea set up
- Control panel system with digital tablet, Air Play sound system
- Air conditioning
- In room safe
- Privileged access to Spa Diane Barrière: swimming pool, aqua circuit, sauna, steam rooms and fitness centre
- Concierge service

All rooms meet the same criteria of quality.
However, their layout and surface area may vary from one to the other.