

B

HÔTEL BARRIÈRE  
LE FOUQUET'S  
PARIS

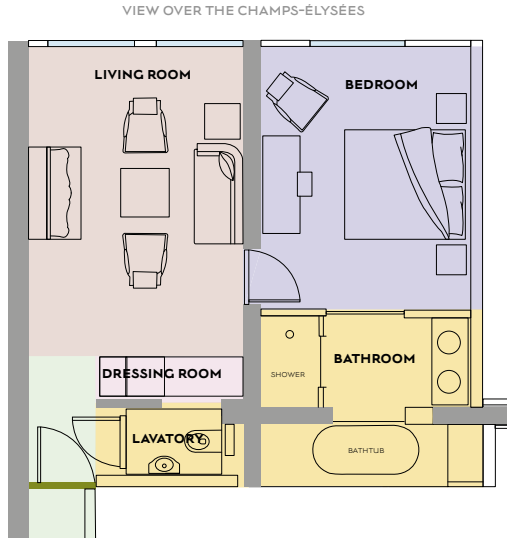


A MEMBER OF  
THE LEADING HOTELS  
OF THE WORLD

# PRESTIGE CHAMPS-ÉLYSÉES SUITE

SURFACE AREA: 50-65 SQM / 540-700 SQFT

Stay in a superb contemporary Suite designed by Jacques Garcia with views over the Champs-Élysées. Equipped with a digital tablet, the soundproofed Prestige Champs-Élysées Suite (50 sqm-65 sqm) features a bedroom with a king size bed, large bathroom and spacious lounge. A haven of elegance from which to enjoy the most beautiful avenue in the world.



## Bedroom

- + Decorated by French designer Jacques Garcia, Signature headboard
- + View over the Champs-Élysées
- + Perfectly sound-proofed (four times glazed windows)
- + King size bed (220x220cm)
- + Dressing room
- + Dressing table

## Living room

### Bathroom

- + Double sized balneotherapy bath tub with TV and a separate shower
- + Double sink
- + Separate lavatory

- + Wi-Fi

- + Minibar offering complimentary selection of

non-alcoholic drinks and snacks

- + Nespresso coffee machine and tea set up
- + Control panel system with digital tablet, Air Play sound system
- + Air conditioning
- + In room safe
- + Privileged access to Spa Diane Barrière: swimming pool, aqua circuit, sauna, steam rooms and fitness centre
- + Concierge & Butler services available 24/7

All suites meet the same criteria of quality.  
However, their layout and surface area may vary from one to the other.